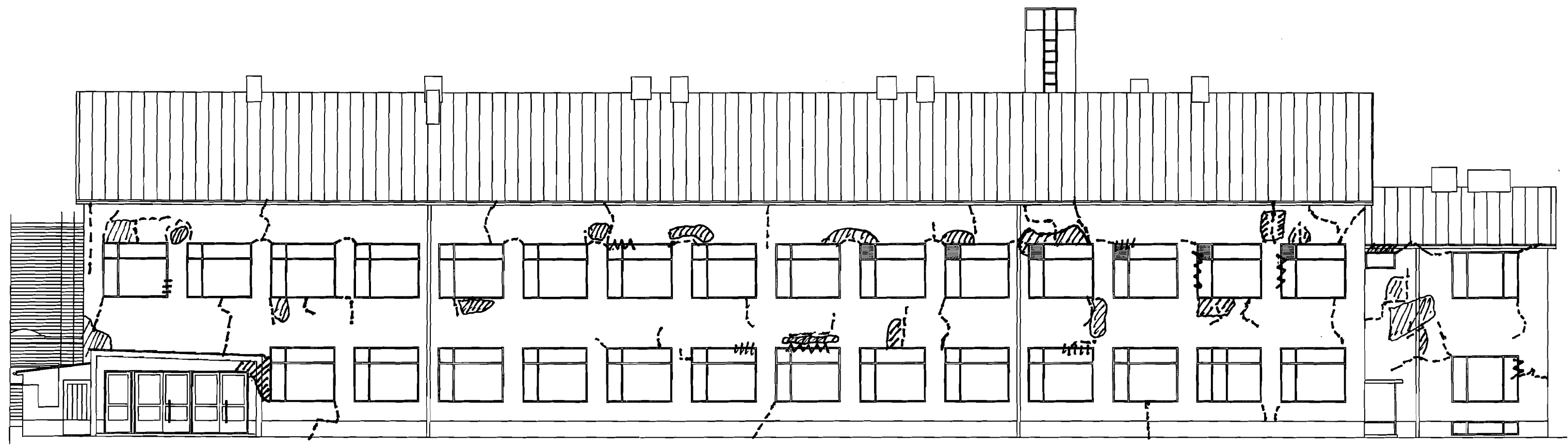

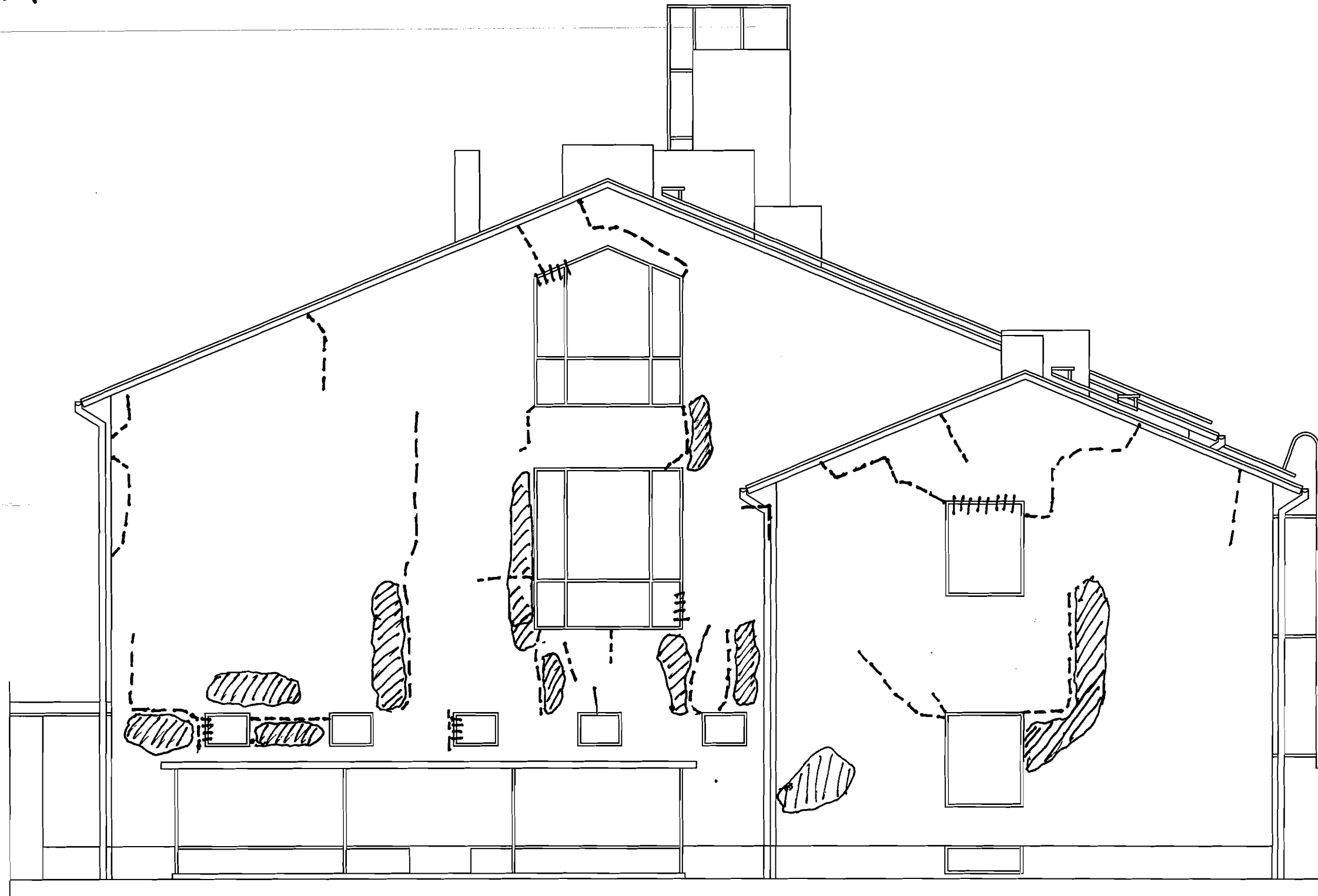





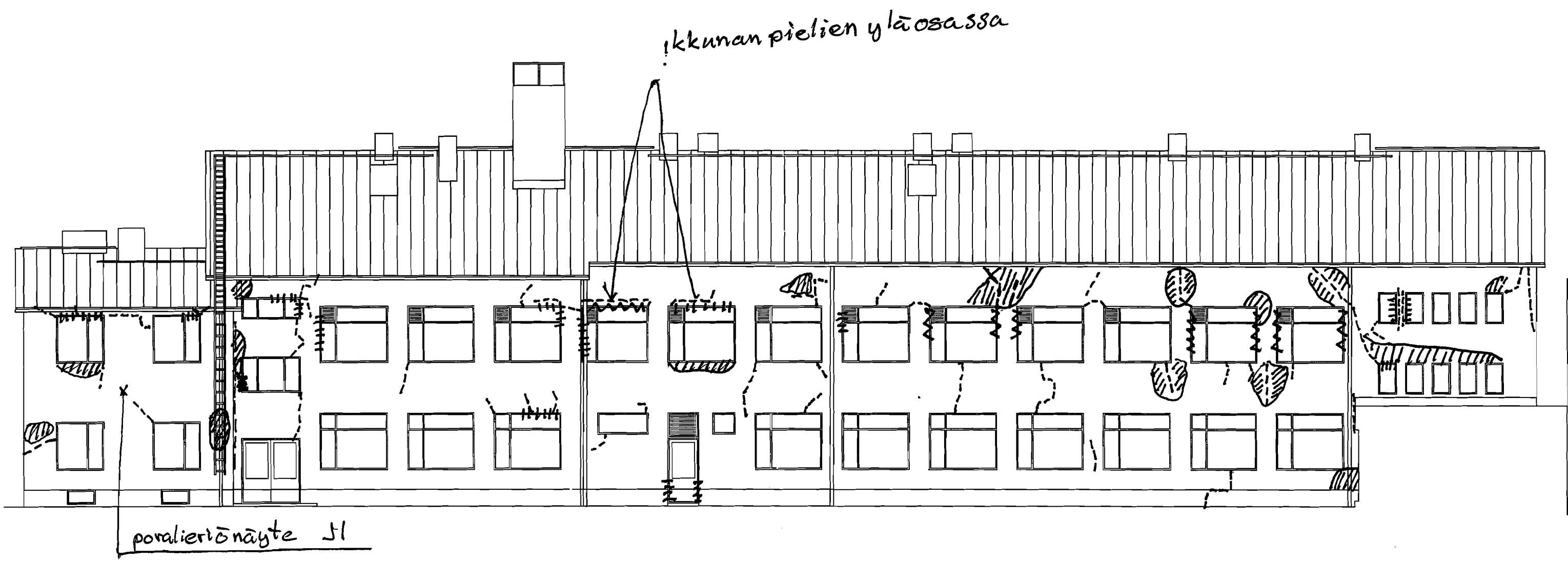
- = pintahalkeama
- ||||| = ns. kopo-alue
- ||||| = pielikopo
- mw = pielirappauksen vaurio



- = pinta halkeama
-  = ns. kopo-alue
- ||||| = pieli kopo

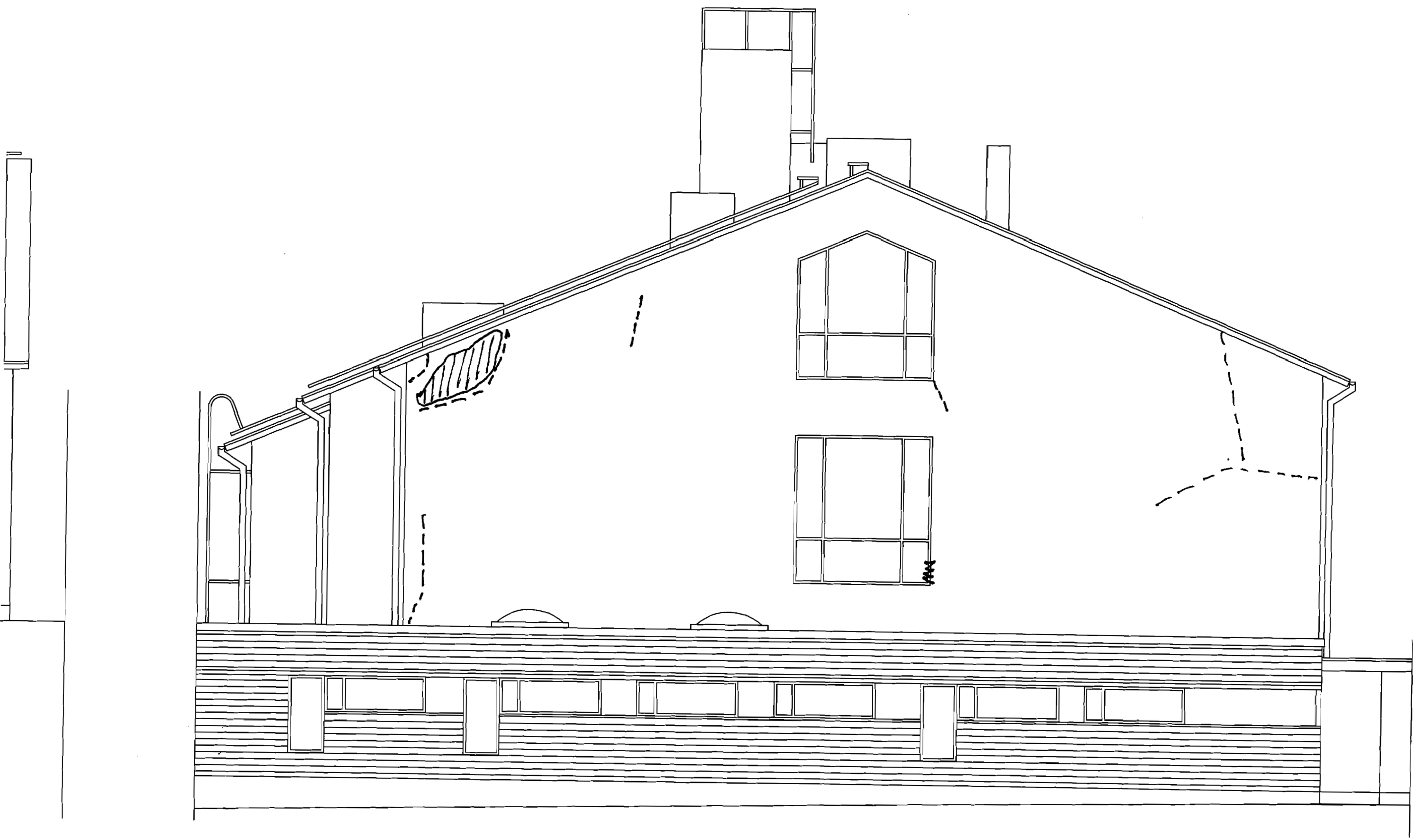




- = pintahalkeama
-  = ns. kopo-alue
-  = pielirappauksen vaurio
-  = pielikopo

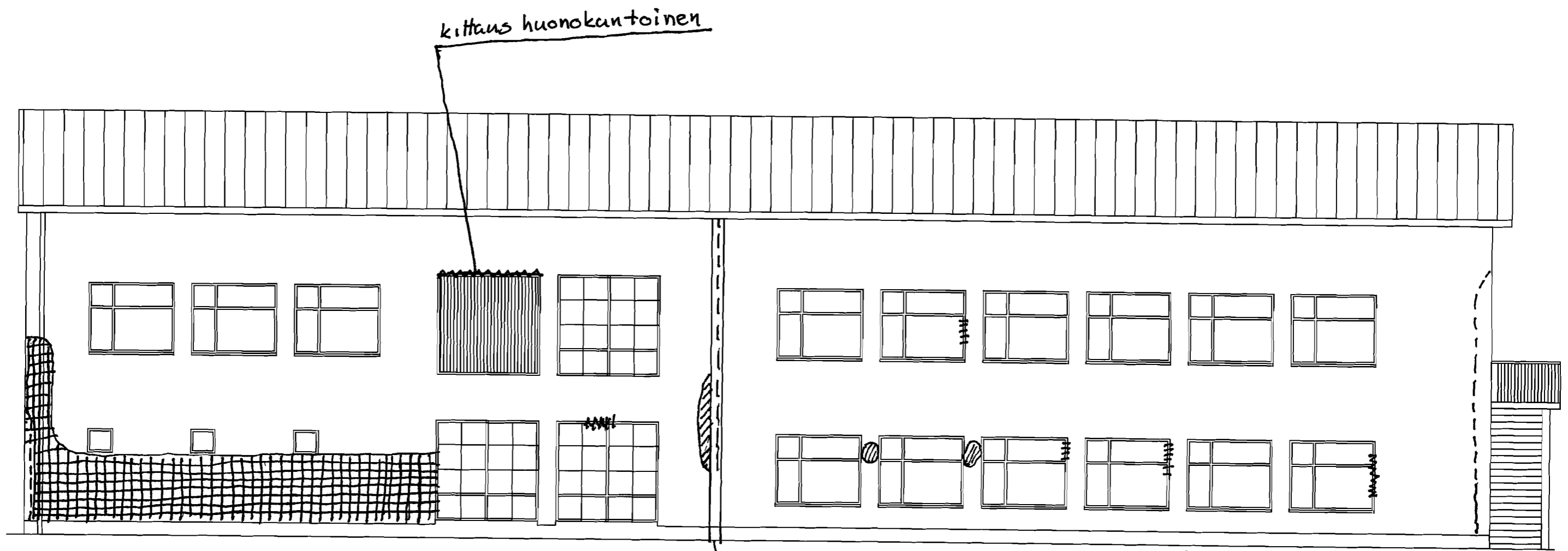


- = pinta halkeama
- ▨ = ns. kopo-alue
- ~ ~ ~ = pielirappauksen vaurio

Liite 2 4/8



- = pinta halkeama
-  = ns. kopo-alue
-  = pintarapautuminen
- mw = pölyrappauksen vaurio
- ||||| = pöly kopo





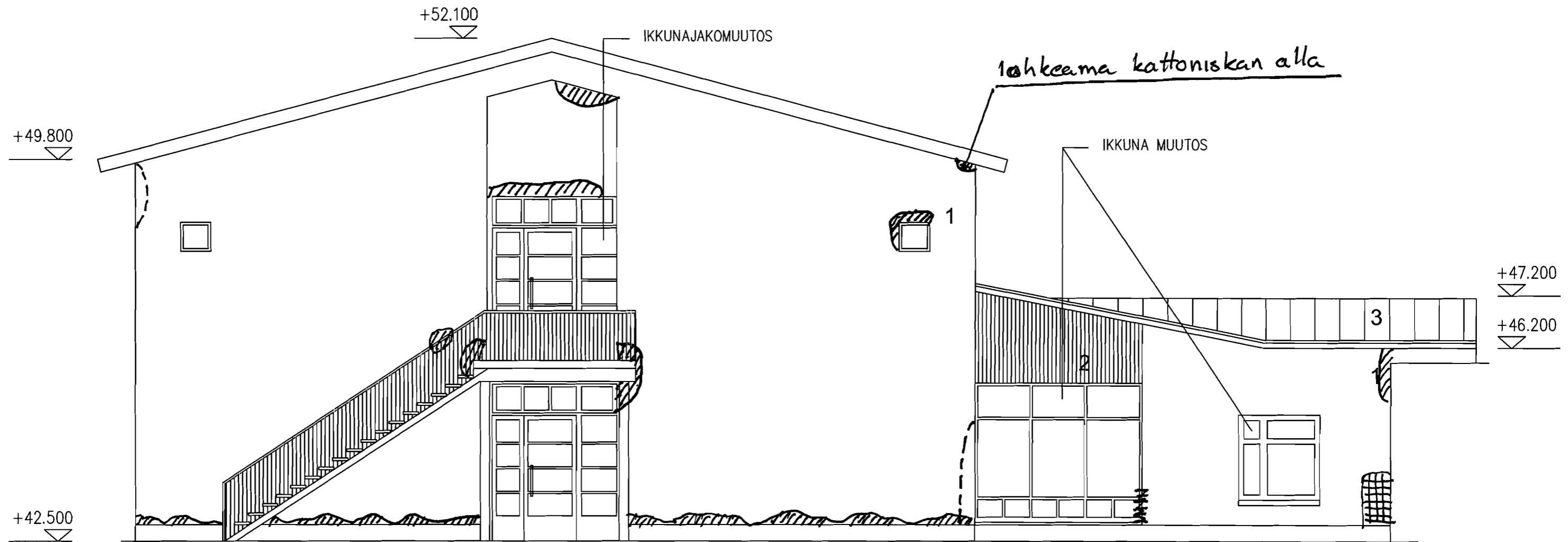
kittaus huonokantoinen

ikkunapellit tällä seinällä huonosti asennettu

JULKISIVU POHJOISEEN

syökytorven takana liikuntasauva,
sauva haljennut, yläosa for leveämpi



- = pinta halkeama
- MMW = pielirappauksen vaurio
- UUU = piehkopo
-  = ns. kopo-alue
-  = pintarapautumista

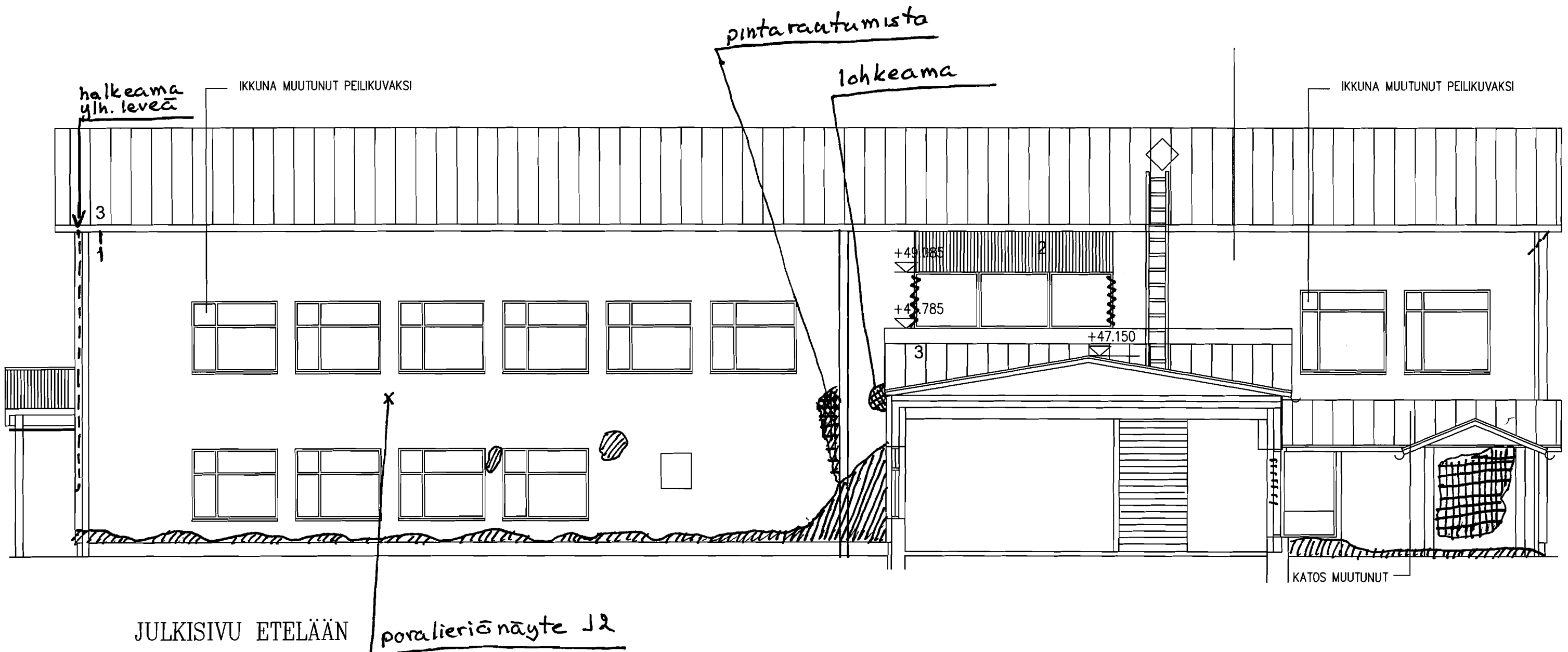




JULKISIVU LÄNTEEN

JULKISIVUMATERJAALIT:

1. RAPPAAUS
2. PUUPANELI
3. KONESAUMAUTTU PELTI
4. ALUMIINIPROFIILI

- = pinta halkeama
- mw = peltirappauksen vaurio
-  = ns. kopo-alue
-  = pintarapautumista
- ||||| = peltirappauksen kopo



- = halkeama, pääsääntöisesti < 0,5 mm
-  = ns. kopo-alue
- mw = peltirappauksen vaurio
-  = pintarapautumaa
- ||||| = pelti kopo

